

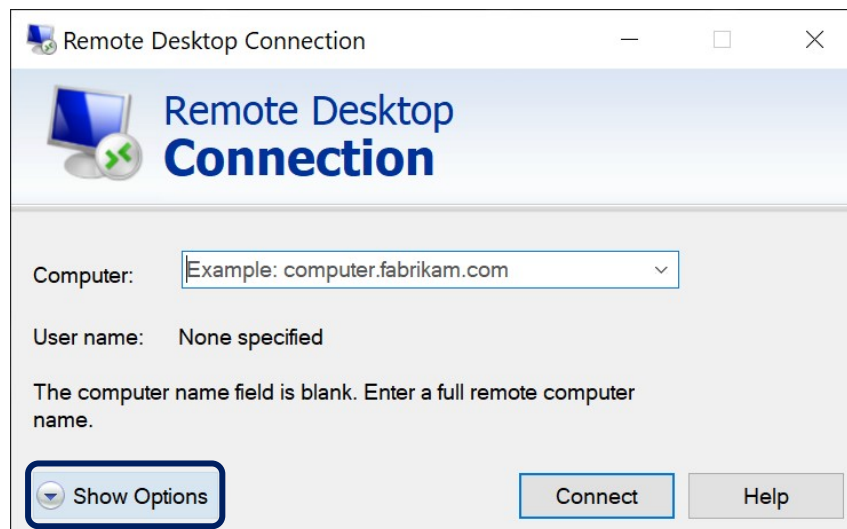
# SIT RD Gateway Connection for Microsoft Windows

School of Information Technology, KMUTT.

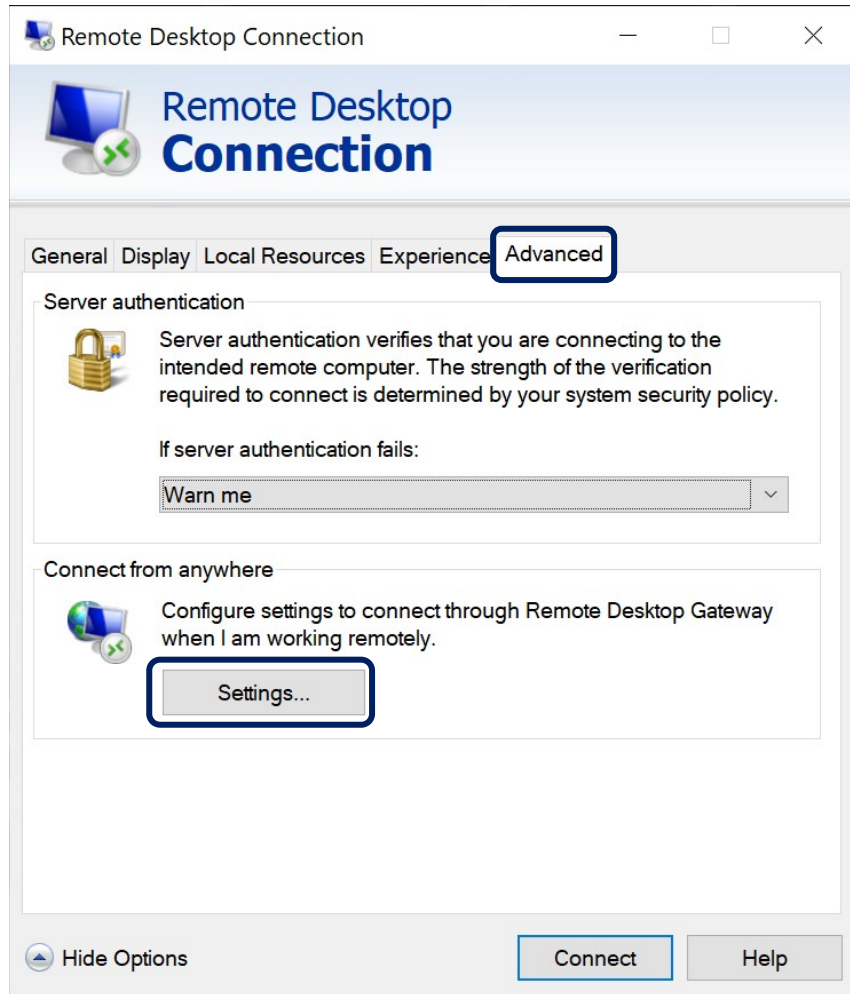
## Step for Microsoft Windows

---

1. Open **Remote Desktop Connection**.
2. Click **Show Options** if it hide.



3. Click tab **Advanced** then in Connect from anywhere click **Settings**.



4. In RD Gateway Setting check **Use these RD Gateway server settings** and fill Server name with **rdp.sit.kmutt.ac.th** then click **OK**.

RD Gateway Server Settings

## Remote Desktop Connection

**Connection settings**

Automatically detect RD Gateway server settings

Use these RD Gateway server settings:

Server name:

Logon method:

Bypass RD Gateway server for local addresses

Do not use an RD Gateway server

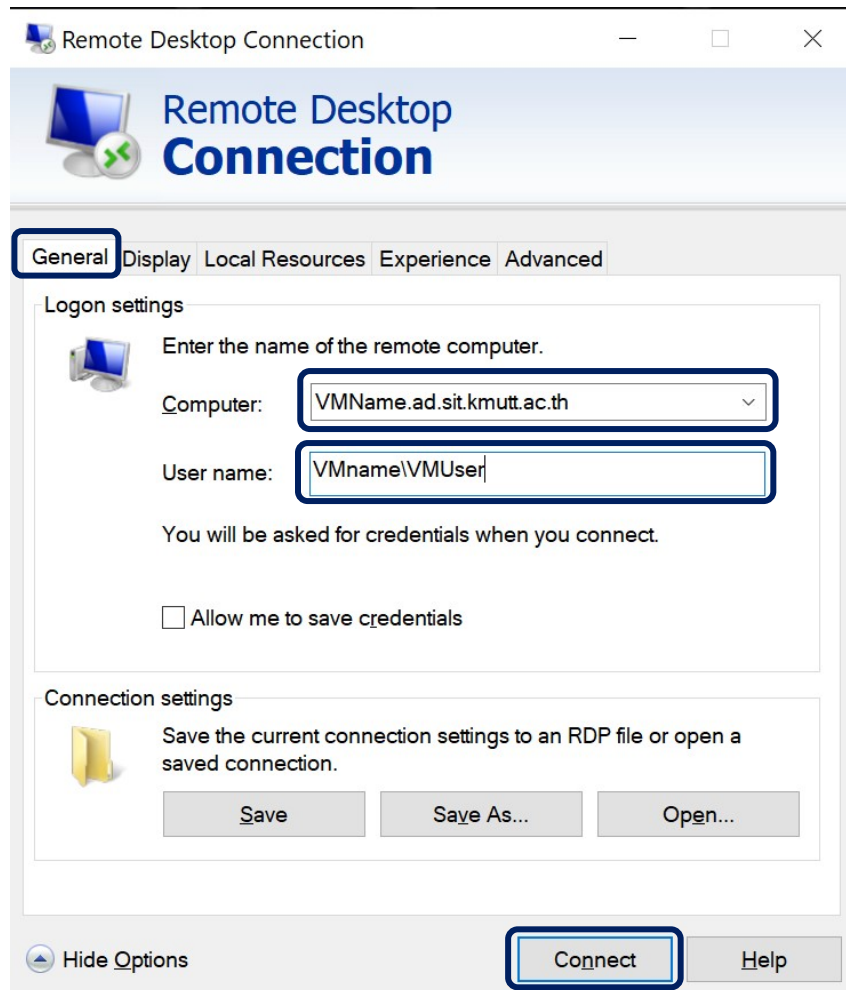
**Logon settings**

User name: None specified

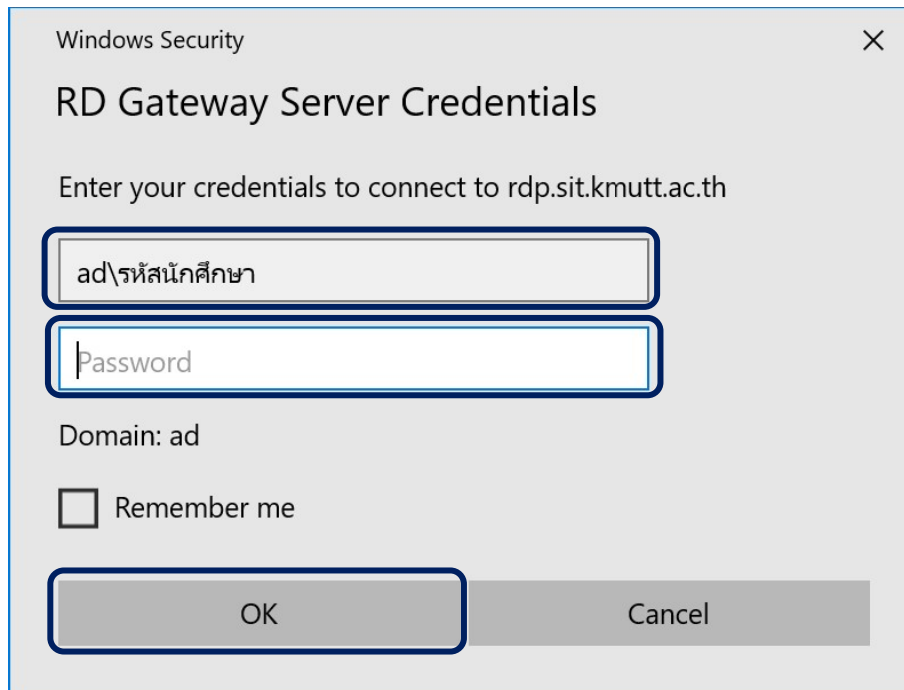
You will be asked for credentials when you connect to this RD Gateway server.

Use my RD Gateway credentials for the remote computer

5. Click tab **General**.
  - a. fill Computer with **VMname** as your lecturer gave and add **.ad.sit.kmutt.ac.th** example **s642int670v041.ad.sit.kmutt.ac.th**.
  - b. fill User name with **VMname\VMuser** as your lecturer gave example **s642int670v041\Administrator**.
  - c. Click **Connect**.



6. In RD Gateway Sever Credentials use **ad\StudentID** as username and use **your email password for password** then click **OK**.



Windows Security

### RD Gateway Server Credentials

Enter your credentials to connect to rdp.sit.kmutt.ac.th

ad\รหัสนักศึกษา

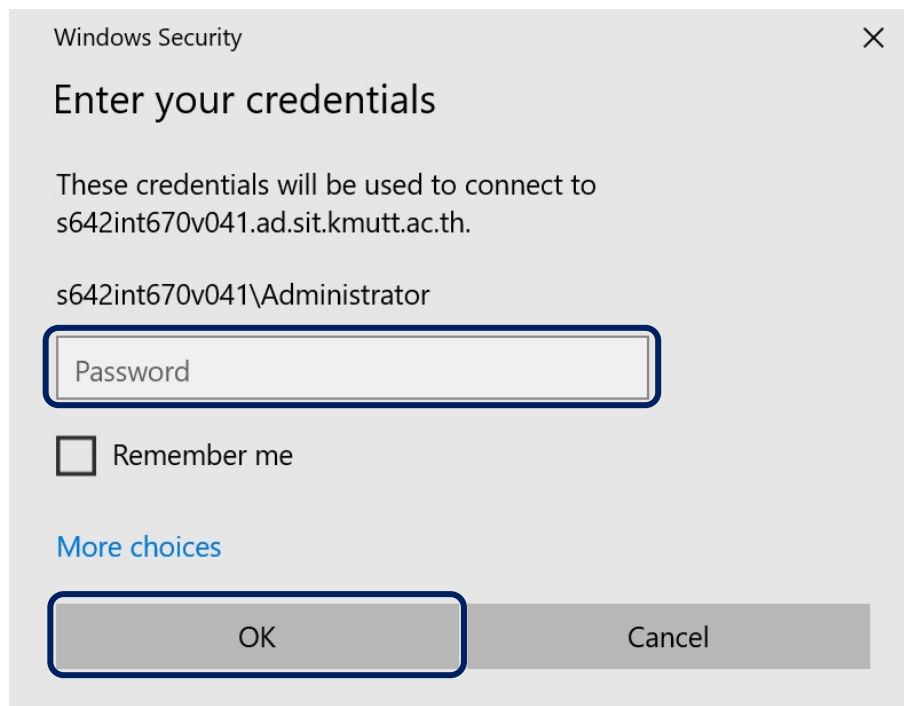
Password

Domain: ad

Remember me

OK Cancel

7. Fill **VM password** as your lecturer gave then click **OK**.



Windows Security

### Enter your credentials

These credentials will be used to connect to s642int670v041.ad.sit.kmutt.ac.th.

s642int670v041\Administrator

Password

Remember me

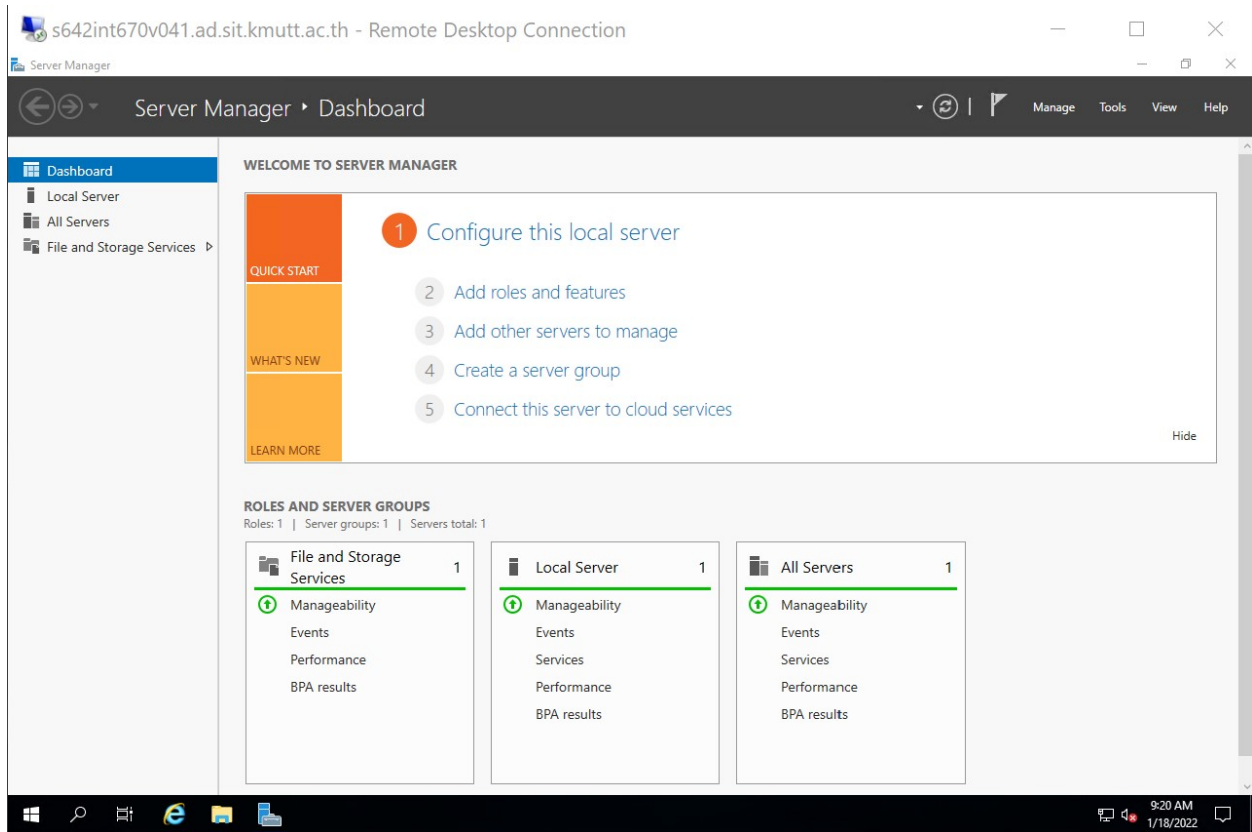
[More choices](#)

OK Cancel

8. Click **Yes** for accept certificate of VM.



9. Done. You are on your VM.



10. If you want to disconnect from VM just close the VM windows.

## Infrastructure, SIT

---

Email : [servicedesk@sit.kmutt.ac.th](mailto:servicedesk@sit.kmutt.ac.th)

Tel. : **02-470-9878**

Microsoft Team : [wuttichai.pae@kmutt.ac.th](mailto:wuttichai.pae@kmutt.ac.th)

**Update by Wuttichai Paewwat**